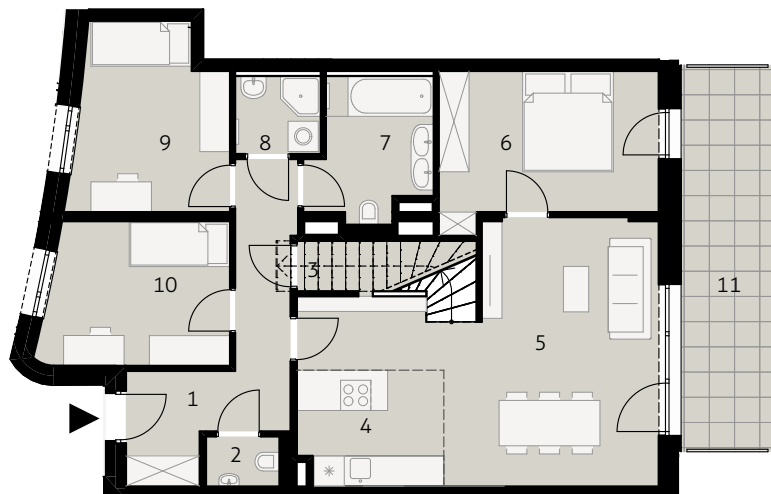




Neudorfer Straße 52-58
Top 27 2. Obergeschoß



- 1 Gang
- 2 WC
- 3 Abstellraum
- 4 Küche
- 5 Wohnzimmer
- 6 Zimmer
- 7 Bad
- 8 Bad
- 9 Zimmer
- 10 Zimmer
- 11 Balkon
Parteienkeller

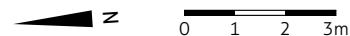
WOHNFLÄCHE
 90,41 m²

ROHDACHBODEN
 14,96 m²

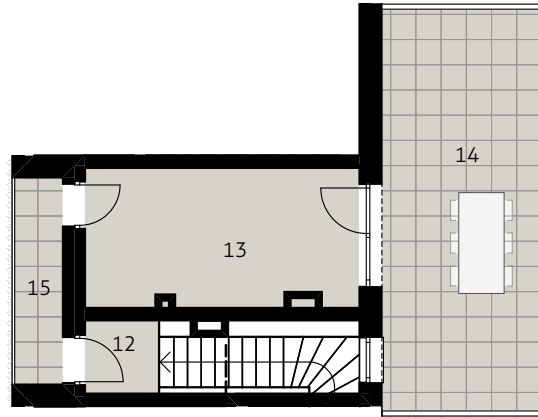
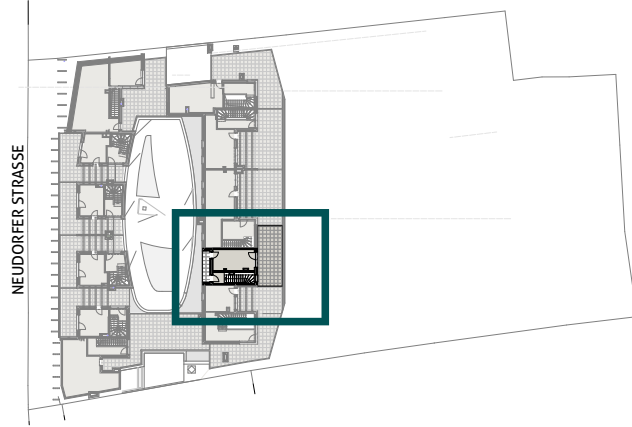
BALKON und TERRASSE
 45,06 m²

PARTEIENKELLER
 3,56 m²

Stand April 2019



Neudorfer Straße 52-58, 2340 Mödling



Neudorfer Straße 52-58
Top 27 Dachboden

- 12 Gang
- 13 Dachboden
- 14 Terrasse
- 15 Terrasse
Parteienkeller

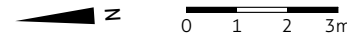
WOHNFLÄCHE
 90,41 m²

ROHDACHBODEN
 14,96 m²

BALKON und TERRASSE
 45,06 m²

PARTEIENKELLER
 2,56 m²

Stand April 2019



Neudorfer Straße 52-58, 2340 Mödling